

# Employee and Family Support Programme



**Supporting our industry through  
life's challenges.**

Our people and their families are what keeps our industry going and the EFP recognises the need to provide support services to ensure they are well looked after.

[www.electricalcharity.org](http://www.electricalcharity.org)



# About the Electrical Industries Charity (EIC)

## An industry charity for industry people

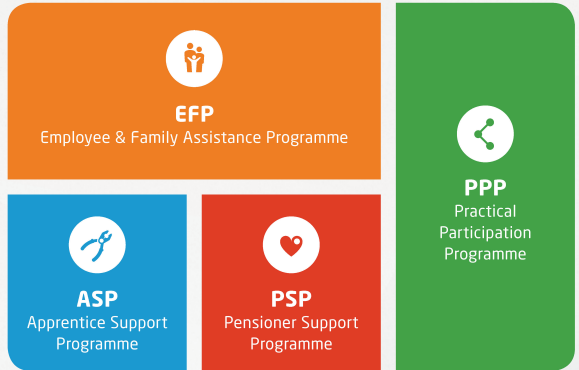
The Electrical Industries Charity is a national charity with an ongoing mission to look after our community.

Our community model of care means we are looking out for apprentices, employees, retired colleagues and their immediate families.

**We can help regardless of age, circumstances or health.**

The Electrical Industries Charity offers four programmes that lead to more productive, more supportive workplaces.

## These programmes are:



## Employee and Family Support Programme (EFP)

The EFP is our flagship programme, developed specifically for our active industry members.

**Staff productivity is a critical factor for any organisation.**

**It is also equally important to recognising the personal life of employees.**

When things go wrong, the EIC is here to help with a range of services which address issues such as family or relationship problems through to ill health and disability.



- 
- Our services include:**
- Mental health support
  - Bereavement counselling
  - Legal advice
  - Advocacy
  - CV support following redundancy and job loss
  - Will support
  - Emergency financial assistance
-

# Key features of the EFP

## Support sessions:

It can be challenging to discuss certain things with those around us for several reasons. Navigating through difficulties can be eased by support sessions with specialists. We can arrange sessions for you, tailored to your individual circumstances and preferences.

## Financial assistance:

At The Electrical Industries Charity, we understand that financial difficulties can impact anyone.

We are here to provide the guidance you need to regain your financial stability.

## Supporting others?

Caring for a friend or relative who is experiencing chronic or critical illness or a disability can be challenging. We appreciate that this may leave you feeling tired and stressed. Reach out for support and guidance if you are feeling overwhelmed.

## Legal advice:

The EIC are able to provide you with a call to a legal advisory team for advice on most matters such as family disputes, consumer law and personal injury.



### Find out more:

Access more info on our support services

## Eligibility Criteria

To be eligible to receive support from us, you must be either actively employed within the electrical or energy sector, have left the industry due to reasons such as ill-health, disability, or retirement, or have previously held a position within this industry. Alternatively, if you share a household with someone who meets these criteria, you may also qualify for assistance. If you are not sure whether you are eligible please call for an informal chat with one of our advisors.




# Get Involved

There are many ways to show your support...

We are passionate about helping people in our industry and know that you are too.



 Help us make a difference



## Access Assistance

 **0800 652 1618**

 **support@electricalcharity.org**

Available Mon - Fri 9am - 5pm, offering free and confidential assistance and guidance to our apprentices in need of support. Our advisors are here to assist everyone with respect and empathy.



**[www.electricalcharity.org](http://www.electricalcharity.org)**

The Electrical Industries Charity is a registered charity in England and Wales (1012131) and in Scotland (SCO 38811). Company No: 2726030 (Company limited by Guarantee). Registered in England and Wales. Registered Office: Rotherwick House, 3 Thomas More St, London, E1W 1YZ. Telephone: 0203 696 1710