



**The power to change**

An industry charity for industry people



# Employee and Family Support Programme

Looking after you and your family

# About the Electrical Industries Charity (EIC)

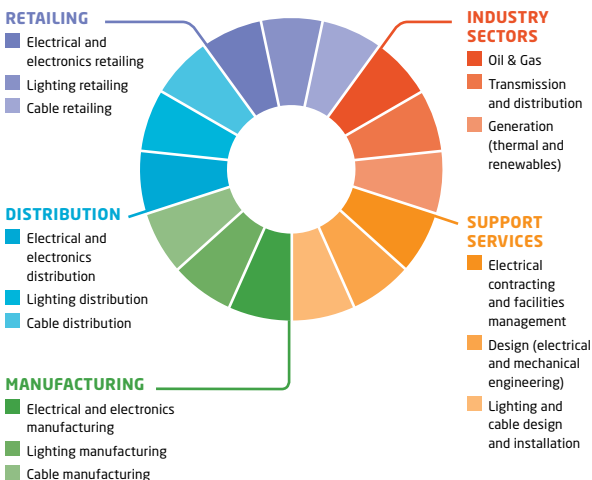
## An industry charity for industry people

The Electrical Industries Charity is a national charity with an ongoing mission to look after our community.

**> We do this by providing financial grants and practical support services to individuals in need**

Our community model of care means we are looking out for apprentices, employees, retired colleagues AND their immediate families. We can help regardless of age, circumstances or health.

## What are electrical industries?



The Electrical Industries Charity (EIC) offers four programmes that lead to more productive, more supportive workplaces.

**These programmes are:**



## Eligibility criteria

For us to be able to help, you should be one of the following:

- Current electrical industries worker
- Former electrical industries worker
- Family of a current or former electrical industries worker

If you are not sure whether you are eligible for our services please call for an informal chat with one of our advisors. You don't need to wait until crisis point before you ask for help; even if you are not eligible we will do our best to point you in the right direction.

---

 **0800 652 1618**

 **support@electricalcharity.org**



**43%** of people still state they would feel uncomfortable in discussing mental health issues with their manager or employer.

## **Employee and Family Support Programme (EFP)**

The Employee and Family Support Programme is our flagship programme, developed specifically for the working heartland of our industry.

Staff productivity is a critical factor for any organisation but equally as important is recognising the personal life of employees. When things go wrong the Electrical Industries Charity is here to help with a range of services which address issues such as family or relationship problems through to debt advice, ill health and disability.

# Introducing **Access Assistance**



**0800 652 1618**



**support@electricalcharity.org**

**Available 7 days a week** offering free and independent assistance for virtually any problem or issue you may encounter. Our trained advisors assist everyone with respect and empathy.

**Access Assistance** is the gateway to the following Employee and Family Support Programme services:

Telephone counselling

Debt advice

Legal advice

Support for carers

Financial grants and assistance

Electrical engineering scholarships

Apprentice scholarships and bursary scheme

Will writing assistance

Career development and transition assistance

Complex case management support

# Key features of the EFP

Any services provided by the Electrical Industries Charity and its partner organisations remain free and confidential.



## Debt solutions

Getting into debt can happen to anyone. If not dealt with sensibly, debt can spiral out of control, leaving people feeling extremely anxious or depressed.

- > **Our advisors put in place tailored solutions to managing debt.**
- 

## Carer support network

One in seven of the working population has caring responsibilities. Carers trying to juggle their work and caring roles are at serious risk of experiencing ill-health.

- > **Our advisors will provide advice, information, and in certain cases financial assistance.**
- 

## Telephone counselling

Outside of talking with friends and family, our ability to find a path out of difficult emotional circumstances can be greatly enhanced by a trained and empathetic counsellor.

- > **Our Advisor will arrange up to 5 sessions with a Telephone Counsellor accredited by the British Association of Counselling and Psychotherapy.**

## Legal advice

General advice can be provided for most legal matters including:

- Family law, wills and probate
- Taxation, state pension and pension credits
- Consumer law, motoring and road traffic accidents
- Personal injury, clinical negligence, and loss of earnings

➤ **Our advisors will arrange a referral to our legal partner. Please note that only general legal advice can be provided and our partner will not take on legal case work.**

---

## Financial assistance and grants

When unforeseen circumstances arise or life deals a blow, a little extra help can make all the difference. For those who can demonstrate financial need, the Electrical Industries Charity may be able to provide a grant for a wide range of needs from the everyday to the exceptional - disability adaptations, mobility equipment, home repairs and also basic essentials like heating and food.

➤ **Advisors will work with the applicant to determine their needs and financial situation.**

---

## Career advice

The Electrical Industries Charity works with a leading provider of interactive online career management through a 'work friend' portal. This has a wealth of audio, video and written material and tools.

➤ **Advice is supplemented by access to an individual telephone career coach for three months.**

**When a challenge becomes overwhelming, whether personal or work related, the impact can be devastating for the individual and for their family.**



**The Employee and Family Support Programme has been proven to facilitate timely intervention that better manages outcomes for individuals, families and business.**



# Providing tangible examples makes the single biggest difference to understanding what we do and how we help

**A 44 year old Electrical Engineer** with a wife and two children under three years of age was working for an offshore company when he was diagnosed with Motor Neuron Disease (MND) and given just 18 months to live.

We were able to provide financial assistance to allow him to carry out his wish of moving to a self-contained apartment in a housing complex with 24hr care. His wife was able to visit with the children and we provided a Wheelchair Accessible Vehicle so they could go out as a family, away from the stresses they were all experiencing at home. We have also provided funding for counselling sessions for both his wife and the children and our support will continue for as long as the family needs us.

---

**fam'i-ly** a social unit of people who will love and support each other through the good times and the bad.



# £24K CHAIR

provides a world  
beyond Cam's  
dreams...



**14 year old Cam** has progressive muscle wasting (Duchenne Muscular Dystrophy or DMD). His dad, Rob, has been an electrician since leaving school.

> **His mum Lisa contacted us for help and our advisor set to work, also contacting other charities for assistance.**

---

## EIC community fundraising is easy and fun!

### Promote powerLottery in the workplace

A lottery is a great way to become part of the Electrical Industries Charity community. Because the Charity is licensed with the Gambling Commission, we take the headache out of the legal stuff.

The monthly powerLottery draw has a top prize of £1,000 and every month the names of winners are announced on our website. It's easy to join. Each ticket is £1 with all surplus income after awarding prizes and some administration costs going to the EIC.

**Call the Lottery Hotline  
0370 034 0075**



# HOW YOU CAN HELP

There are many ways to show your support...

- Sign up to our free workplace programmes
- Request an EIC fundraising pack and do something amazing to raise funds
- Coordinate a team challenge
- Join in or coordinate an EIC sporting challenge. Get active for a cause with loads of events to choose from
- Join an EIC Regional Committee
- Attend regional events
- Make a mobile phone donation right now – text POWR01 £10 to 70070
- Play powerLottery – the odds of winning are better than the National Lottery

*power  
Lottery*

For more information email  
**[business@electricalcharity.org](mailto:business@electricalcharity.org)**  
or visit **[www.electricalcharity.org](http://www.electricalcharity.org)**

The Electrical Industries Charity  
is the national charity for the  
electrical and energy industries

**Providing a hand-up when  
and where it is needed**

 **0800 652 1618**

 **support@electricalcharity.org**

 @electriccharity

 facebook.com/electricalcharity

 youtube/electricalcharity

**www.electricalcharity.org**

The Electrical Industries Charity is a registered charity in  
England and Wales (1012131) and in Scotland (SCO 38811)

**Patron:** HM The Queen

**Company No:** 2726030 (Company limited by Guarantee)  
Registered in England and Wales

**Registered Office:** Rotherwick House, 3 Thomas More  
Street, London E1W 1YZ

**Telephone:** 0203 696 1710

